

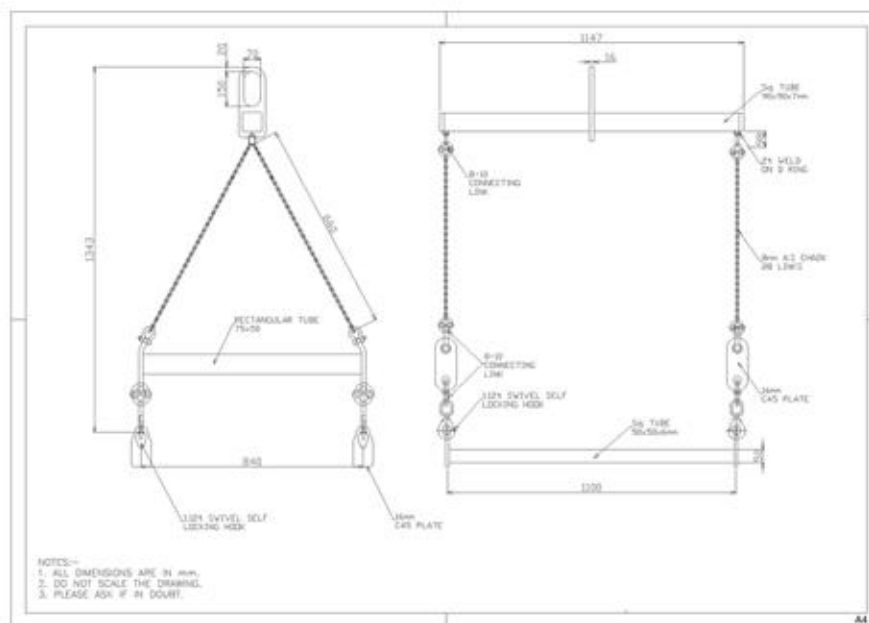
RAAH Safety IBC & Pallet Lifter model #IBC012



IBC and Pallet Lifter has been designed to safely lift a complete IBC container or a pallet using a crane. More secure method compared to fork pallet lifter.

Includes:

- Spreader Beam
- Chain and Fittings
- Connector
- Safety hooks
- WLL - 2000 Kgs / 4400 Lbs



Additional Information:

- The IBC Lifter has been constructed with a four point lift
- Offers lifting reliability and improves processes effectively
- Features upper and lower spreader beam